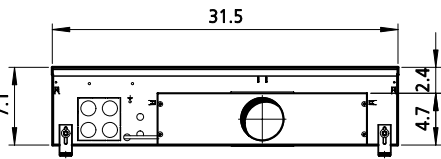
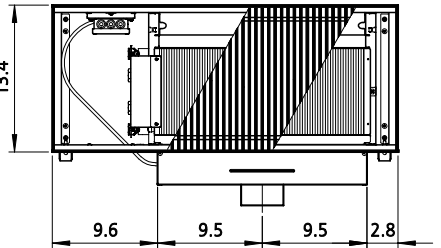


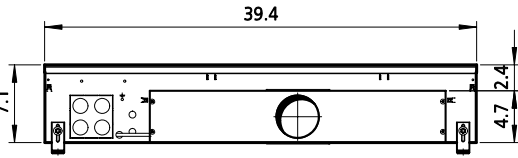
Technische Zeichnungen, Katherm ID (B340, H180), Abmessungen [Inch] / Technical drawings, Katherm ID (B340, H180), Dimensions [Inch]



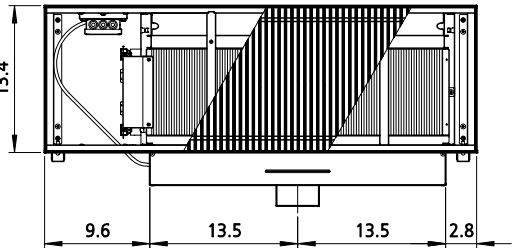
Vorderansicht / Front view



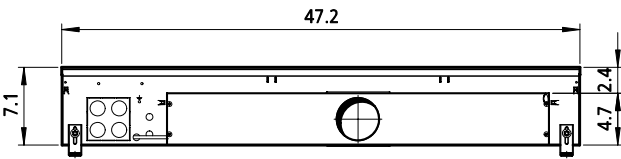
Draufsicht / Top view



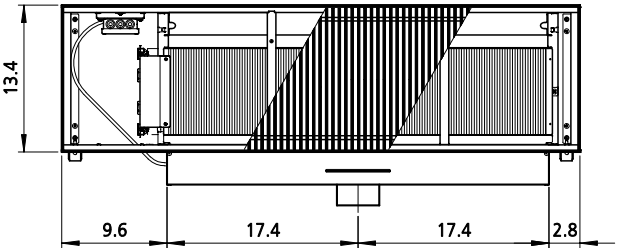
Vorderansicht / Front view



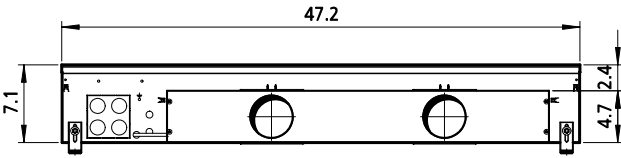
Draufsicht / Top view



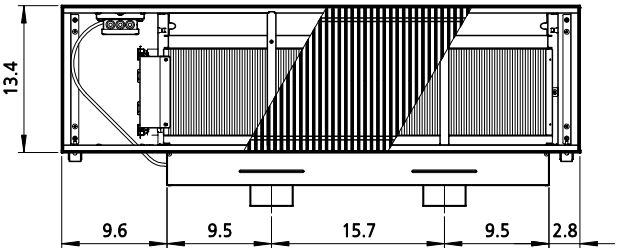
Vorderansicht / Front view



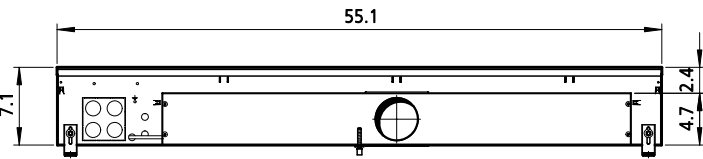
Draufsicht / Top view



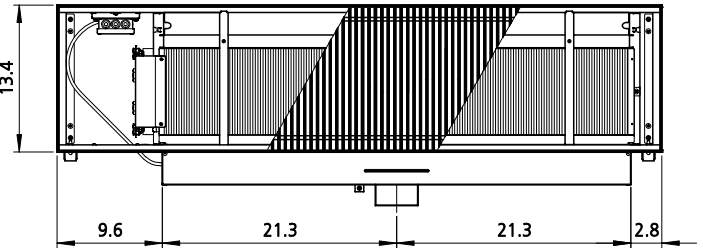
Vorderansicht / Front view



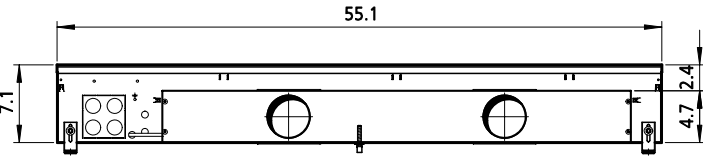
Draufsicht / Top view



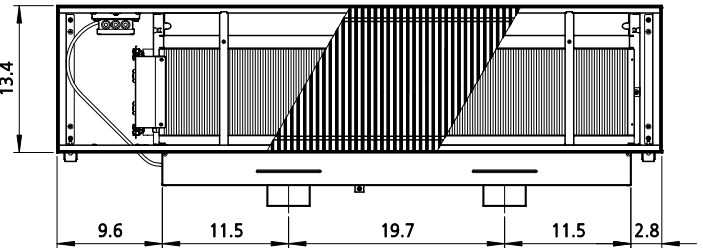
Vorderansicht / Front view



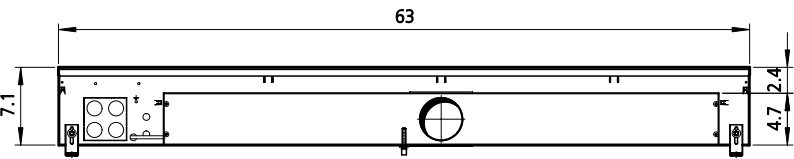
Draufsicht / Top view



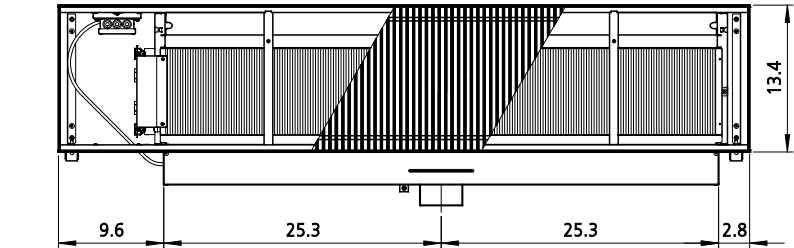
Vorderansicht / Front view



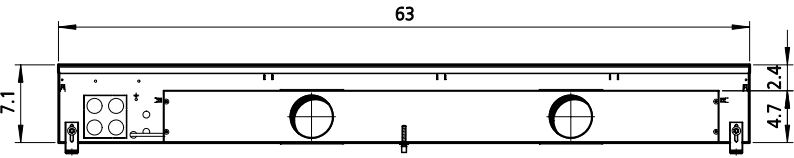
Draufsicht / Top view



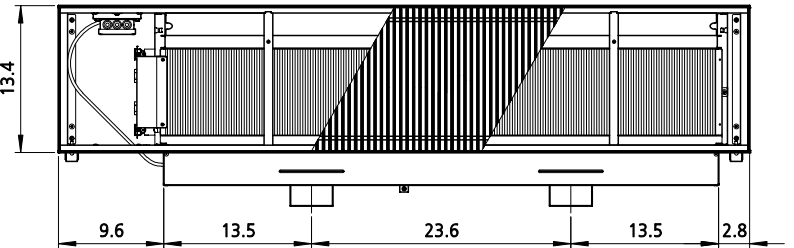
Vorderansicht / Front view



Draufsicht / Top view

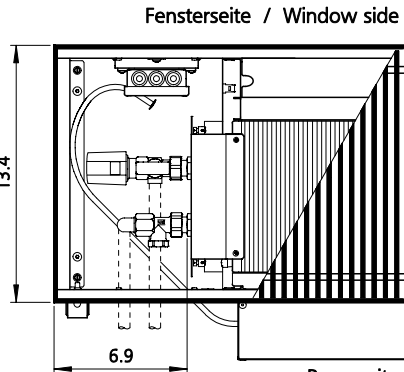


Vorderansicht / Front view

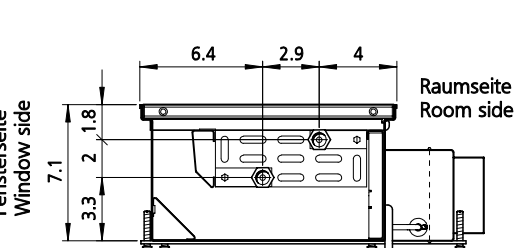


Draufsicht / Top view

Details, Beispiel 2-Leiter
Details, example 2-pipe

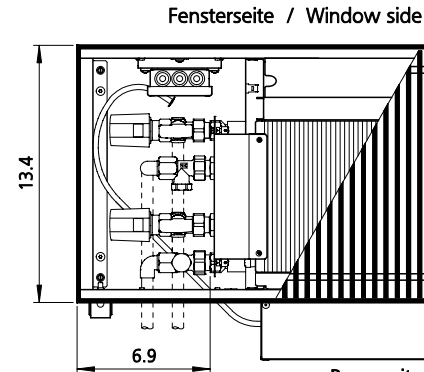


Draufsicht mit Ventilkit (optional)
Top view with valve kit (optional)

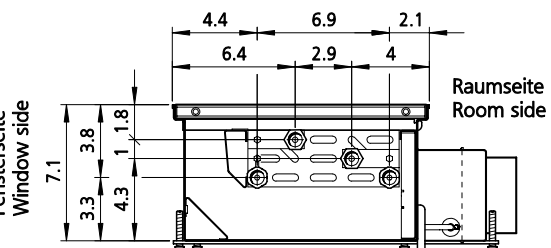


Schnitt / Cross-section

Details, Beispiel 4-Leiter
Details, example 4-pipe

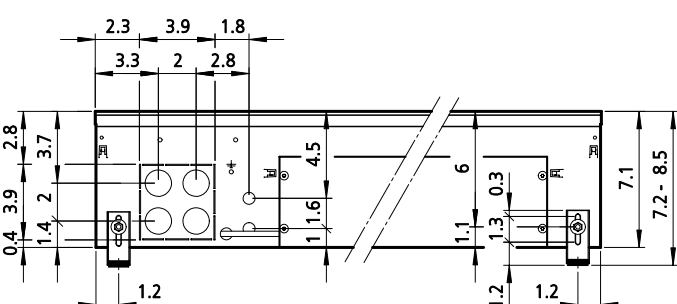


Draufsicht mit Ventilkit (optional)
Top view with valve kit (optional)



Schnitt / Cross-section

Details, Beispiel für 2- und 4-Leiter
Details, example for 2- and 4-pipe



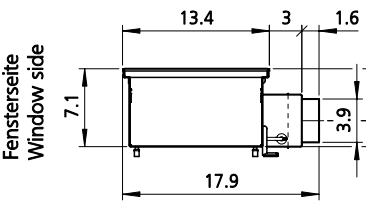
Vorderansicht / Front view

Anzahl Stutzen
Number of connecting pieces

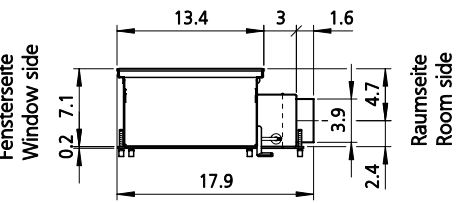
L	K1	K2	K3	K4
31.5	1	1	1	1
39.4	1	1	1	1
47.2	1	1	1	2
55.1	1	1	1	2
63.0	1	1	2	2

L = Längen / lengths in Inch

Primärluftvolumenstrom:
Primary air volume:
K1 = niedrig / low
K2 = mittel / medium
K3 = hoch / high
K4 = sehr hoch / very high
< 47 cfm
= 1 Stutzen
1 Connecting piece
>= 47 cfm
= 2 Stutzen
2 Connecting pieces



Seitenansicht für Längen 800 / 1000 / 1200 mm
Side view for lengths 800 / 1000 / 1200 mm



Seitenansicht für Längen 1400 / 1600 mm
Side view for lengths 1400 / 1600 mm

Draufsichten ohne Anschlussabdeckung / Top views without cover plate

Datum	Name	Format	Art-Gr.	Version	CAD-Nr.
Erst. 26.10.21	SW	3	241	1	884204
Änder. 30.05.22	SW				
KAMPMANN 49794 Lingen (Ems) Tel. (0591) 7108-0 • Fax 7108-300 eMail: info@kampmann.de Internet: www.kampmann.de					
CAD-Zeichnung Ansichten Katherm ID Abmessungen					
Angeb.-Nr. Auftr.-Nr.					
Index	Änderung	Datum	Name	Zul.Abw.	ISO 2768-m
Bereich		Dokumentation		Maßstab 1:17,5 Blatt	